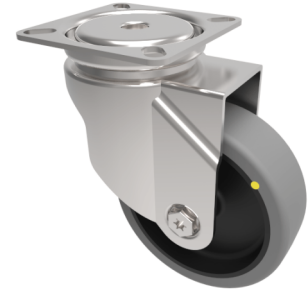


## Electrically Conductive Rubber Plate Swivel Castor 75mm 60kg Load

**Product code: BZRA75GRECBJ**



Pressed steel swivel castor with a flat plate fitted with a grey electrically conductive rubber tyre on polypropylene centred wheel with ball bearings. Wheel diameter 75mm, tread width 24mm, overall height 101mm plate size 60mm x 60mm, hole centres 49mm x 49mm or 42mm x 42mm with a Load capacity 60kg. Conductive offers a resistance  $R < 10 \Omega$

**\*\*MANUFACTURED TO ORDER\*\***

Diameter (mm)	75
Fixing Option	Plate
Castor Type	Swivel
Plate Size (mm)	60 x 60
Hole Centres (mm)	42/49 x 42/49
Height (mm)	101
Bearing Type	Ball
Swivel Radius (mm)	65
Wheel Material	Electrically Conductive Rubber
Colour / Shore Hardness	Grey Electrically Conductive Rubber on Nylon Rim / 85 Shore A
Top Plate Thickness (mm)	1.8
Fork Thickness (mm)	1.8
Temperature Resistance	-15 °C TO +80 °C
To Suit Fixing Bolt (mm)	6
Tread (mm)	24
Load Capacity (kg)	60

### BIL GROUP LTD

Porte Marsh Road, Calne, Wiltshire, SN11 9BW

Registered in England No: 2603821

VAT Reg: GB572705729

