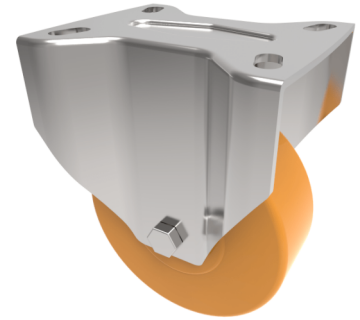


## Epoxy Resin Plate Fixed Castor 100mm 160kg Load

**Product code: SSMHF100ANBJ/250**



Grade 304 Stainless steel fixed castor with a top plate fixing fitted with a high temperature orange epoxy resin wheel with BZP ball bearings and high temperature grease. Wheel diameter 100mm, tread width 38mm, overall height 128mm, top plate 100mm x 85mm, hole centres 80mm x 60mm or 75mm x 45mm. Load capacity 150kg. maximum temperature 250c

Diameter (mm)	100
Fixing Option	Plate
Castor Type	Fixed
Plate Size (mm)	100 x 85
Hole Centres (mm)	80/75 x 60/45
To Suit Fixing Bolt (mm)	8
Height (mm)	128
Bearing Type	Ball
Wheel Material	Epoxy Resin
Colour / Shore Hardness	Orange High Temperature Epoxy Resin
Temperature Resistance	-20 °C to +250 °C
Load Capacity (kg)	160
Tread (mm)	38
Top Plate Thickness (mm)	2.5
Fork Thickness (mm)	2.5

### BIL GROUP LTD

Porte Marsh Road, Calne, Wiltshire, SN11 9BW

Registered in England No: 2603821

VAT Reg: GB572705729

