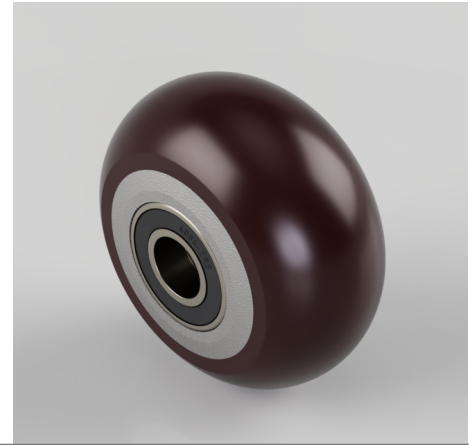


Ergonomic Polyurethane 100mm Ball Bearing Wheel 350kg Load

Product code: BZMH100WRPTABJM2

100mm diameter brown ergonomic polyurethane tyred on an aluminium centred wheel with a ball bearing. Tread width 50mm, bore 20mm, hub 50mm. Load capacity 350kg.



Wheel Material	Polyurethane on Aluminium
Diameter (mm)	100
Load Capacity (kg)	350
Bearing Type	Ball
Bore Size (mm)	20
Tread (mm)	50
Hub Width (mm)	50
Colour / Shore Hardness	Brown Ergonomic Polyurethane on Aluminium Rim / 95 Shore A
Temperature Resistance	-20 °C TO +80 °C

BIL GROUP LTD

Porte Marsh Road, Calne, Wiltshire, SN11 9BW

Registered in England No: 2603821

VAT Reg: GB572705729

