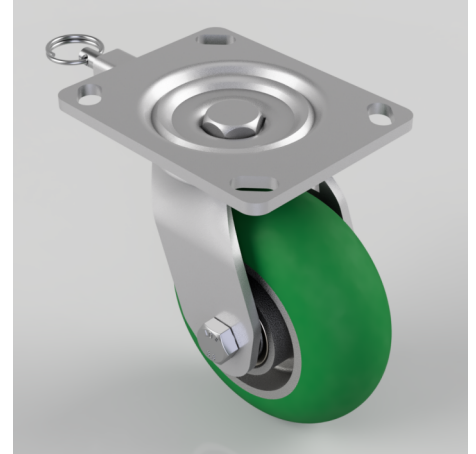


Ergonomic Polyurethane on Aluminium Plate Swivel Castor Directional Lock 125mm 350kg Load

Product code: VSL125EAPJP05-DL

Fabricated steel swivel castor with a top plate fixing fitted with green ergonomic polyurethane on aluminium centred wheel with ball journal bearings and directional lock. Wheel diameter 125mm, tread width 51mm, overall height 159mm, top plate 130mm x 104mm, hole centres 105mm x 80mm. Load capacity 350kg.



Diameter (mm)	125
Castor Type	Swivel
Fixing Option	Plate
Height (mm)	159
Wheel Material	Polyurethane on Aluminium
Colour / Shore Hardness	Green Polyurethane on Aluminium Rim / 85 Shore A
Temperature Resistance	TBC
Bearing Type	Ball
Load Capacity (kg)	350
Tread width (mm)	51
Swivel Radius (mm)	92.5
Plate Size (mm)	130 x 104
Hole Centres (mm)	105 x 80
Top Plate Thickness (mm)	5
Fork Thickness (mm)	5
To Suit Fixing Bolt (mm)	10
Brand	Varley

BIL GROUP LTD

Porte Marsh Road, Calne, Wiltshire, SN11 9BW

Registered in England No: 2603821

VAT Reg: GB572705729

