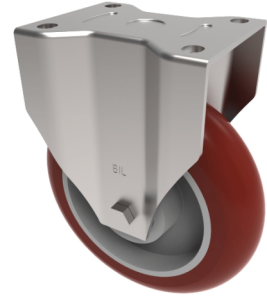


Ergonomic Polyurethane Plate Fixed Castor 100mm 350kg Load

Product code: BZPHF100RPTABJ



Pressed steel fixed castor with a top plate fixing fitted with a ergonomic polyurethane round profile wheel with aluminium centre with ball bearings. Wheel diameter 100mm, tread width 50mm, overall height 132mm, plate size 135mm x 110mm, hole centres 105mm x 80/75mm. Load capacity 350kg.

Diameter (mm)	100
Castor Type	Fixed
Fixing Option	Plate
Height (mm)	132
Wheel Material	Polyurethane on Aluminium
Colour / Shore Hardness	Brown Ergonomic Polyurethane on Aluminium Rim / 95 Shore A
Temperature Resistance	-20 °C TO +80 °C
Bearing Type	Ball
Load Capacity (kg)	350
Tread (mm)	50
Plate Size (mm)	135 x 110
Hole Centres (mm)	105 x 75/80
Top Plate Thickness (mm)	4
Fork Thickness (mm)	4
To Suit Fixing Bolt (mm)	10

BIL GROUP LTD

Porte Marsh Road, Calne, Wiltshire, SN11 9BW

Registered in England No: 2603821

VAT Reg: GB572705729

