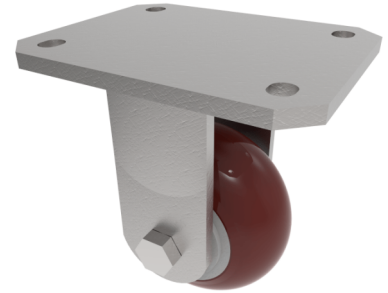


## Ergonomic Polyurethane Plate Fixed Castor 100mm 350kg Load

**Product code: BZMJF100RPTABJ**

Fabricated white zinc ROHS plated Fixed castor with a top plate fixing fitted with a ergonomic brown polyurethane tyred wheel with aluminium centre with ball bearings. Wheel diameter 100mm, tread width 50mm, overall height 143mm, plate size 138mm x 110mm, hole centres 105mm x 80/75mm. Load capacity 350kg.



Diameter (mm)	100
Fixing Option	Plate
Castor Type	Fixed
Bearing Type	Ball
Height (mm)	143
Plate Size (mm)	138 x 110
Hole Centres (mm)	105 x 80/75
To Suit Fixing Bolt (mm)	10
Wheel Material	Polyurethane on Aluminium
Colour / Shore Hardness	Brown Ergonomic Polyurethane on Aluminium Rim / 95 Shore A
Temperature Resistance	-20 °C TO +80 °C
Top Plate Thickness (mm)	7
Fork Thickness (mm)	6
Load Capacity (kg)	350
Tread (mm)	50

### BIL GROUP LTD

Porte Marsh Road, Calne, Wiltshire, SN11 9BW

Registered in England No: 2603821

VAT Reg: GB572705729

