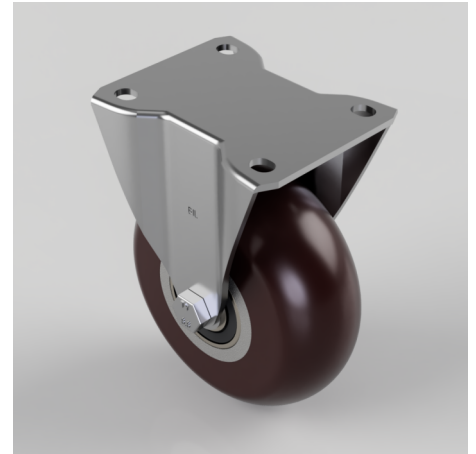


Ergonomic Polyurethane Plate Fixed Castor 125mm 450kg Load

Product code: BZHF125RPTABJ

Pressed steel fixed castor with a top plate fixing fitted with a brown ergonomic polyurethane tyred on a aluminium centred wheel with a ball bearing. Wheel diameter 125mm, tread width 50mm, overall height 156mm, top plate 105mm x 86mm, hole centres 80mm x 60mm. Load capacity 450kg.



Diameter (mm)	125
Castor Type	Fixed
Fixing Option	Plate
Height (mm)	156
Wheel Material	Polyurethane on Aluminium
Colour / Shore Hardness	Brown Ergonomic Polyurethane on Aluminium Rim / 95 Shore A
Temperature Resistance	-20 °C TO +80 °C
Bearing Type	Ball
Load Capacity (kg)	450
Tread (mm)	50
Plate Size (mm)	105 x 86
Hole Centres (mm)	80 X 60
Top Plate Thickness (mm)	3
Fork Thickness (mm)	3
To Suit Fixing Bolt (mm)	8

BIL GROUP LTD

Porte Marsh Road, Calne, Wiltshire, SN11 9BW

Registered in England No: 2603821

VAT Reg: GB572705729

