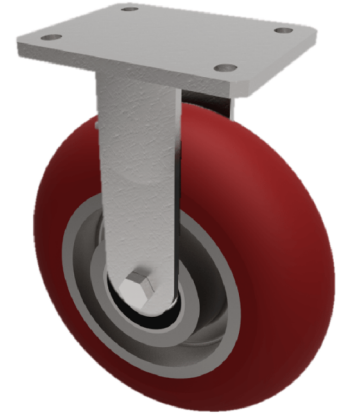


Ergonomic Polyurethane Plate Fixed Castor 125mm 450kg Load

Product code: BZSABF125RPTABJ

Fabricated yellow ROHS zinc plated swivel castor with a top plate fixing fitted with a brown ergonomic polyurethane wheel on an aluminium centre with ball journal bearings. Wheel diameter 125mm, tread width 50mm, overall height 175mm, top plate 138mm x 110mm, hole centres 105mm x 80/75mmmm. Load capacity 450kg.



Diameter (mm)	125
Fixing Option	Plate
Castor Type	Fixed
Bearing Type	Ball
Height (mm)	175
Plate Size (mm)	138 x 110
Hole Centres (mm)	105 x 80
To Suit Fixing Bolt (mm)	10
Wheel Material	Polyurethane on Aluminium
Colour / Shore Hardness	Brown Ergonomic Polyurethane on Aluminium Rim / 95 Shore A
Temperature Resistance	-20 °C TO +80 °C
Top Plate Thickness (mm)	8
Fork Thickness (mm)	6
Load Capacity (kg)	450
Tread (mm)	50

BIL GROUP LTD

Porte Marsh Road, Calne, Wiltshire, SN11 9BW

Registered in England No: 2603821

VAT Reg: GB572705729

