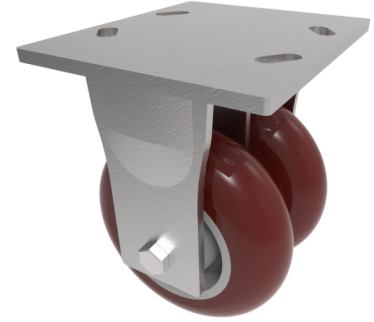


## Ergonomic Polyurethane Plate Fixed Castor 150mm 1150kg Load

**Product code: 2BZKF150RPTABJ**



Fabricated twin wheel fixed castor with a top plate fixing fitted with 2 x brown ergonomic polyurethane tyred aluminium centred wheels with ball bearings. Wheel diameters 150mm, tread width 50mm x2, overall height 200mm, top plate 175mm x 150mm, hole centres 105mm x 80mm or 175mm x 150mm. Load capacity 1150kg.

Diameter (mm)	150
Fixing Option	Plate
Castor Type	Fixed
Bearing Type	Ball
Plate Size (mm)	175 x 150
Hole Centres (mm)	105/121 x 80/59
Height (mm)	200
To Suit Fixing Bolt (mm)	12
Wheel Material	Polyurethane on Cast Iron
Colour / Shore Hardness	Brown Ergonomic Polyurethane on Aluminium Rim / 95 Shore A
Temperature Resistance	&quot;-20 °C TO +80 °C
Tread (mm)	2 x 50
Load Capacity (kg)	1150
Top Plate Thickness (mm)	7.5
Fork Thickness (mm)	6

### BIL GROUP LTD

Porte Marsh Road, Calne, Wiltshire, SN11 9BW

Registered in England No: 2603821

VAT Reg: GB572705729

