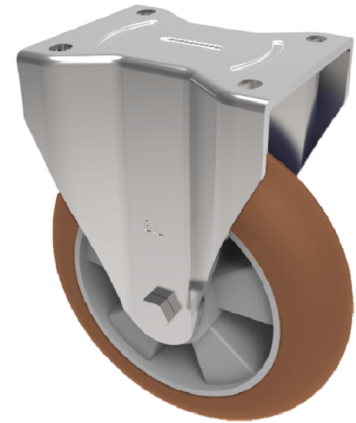


Ergonomic Polyurethane Plate Fixed Castor 200mm 700kg Load

Product code: BZSPHF200RPTABJ

Pressed steel fixed castor with a top plate fixing fitted with a round ergonomic polyurethane tyre aluminium centred wheel with ball bearings. Wheel diameter 200, tread width 50mm, overall height 238mm, plate size 135mm x 110mm, hole centres 105mm x 80mm/75mm. Load capacity 700kg.



Diameter (mm)	200
Castor Type	Fixed
Fixing Option	Plate
Height (mm)	238
Wheel Material	Polyurethane on Aluminium
Colour / Shore Hardness	Brown Ergonomic Polyurethane on Aluminium Rim / 95 Shore A
Temperature Resistance	-20 °C TO +80 °C
Bearing Type	Ball
Load Capacity (kg)	700
Tread (mm)	50
Plate Size (mm)	135 x 115
Hole Centres (mm)	105 x 80/75
Top Plate Thickness (mm)	5
Fork Thickness (mm)	5
To Suit Fixing Bolt (mm)	10

BIL GROUP LTD

Porte Marsh Road, Calne, Wiltshire, SN11 9BW

Registered in England No: 2603821

VAT Reg: GB572705729

