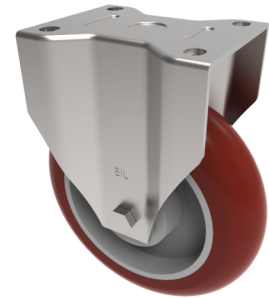


Ergonomic Polyurethane Plate Fixed Castor 200mm 775kg Load

Product code: BZXPF200RPTABJ



Pressed steel fixed castor with a top plate fixing fitted with a blue 95 shore A Brown polyurethane tyre on aluminium centred wheel with ball bearings. Wheel diameter 200mm, tread width 50mm, overall height 245mm, top plate 135mm x 110mm, hole centres 105mm x 80mm/75mm. Load capacity 775kg at 4kph.

Diameter (mm)	200
Castor Type	Fixed
Fixing Option	Plate
Height (mm)	245
Wheel Material	Polyurethane on Aluminium
Colour / Shore Hardness	Brown Ergonomic Polyurethane on Aluminium Rim / 95 Shore A
Temperature Resistance	-20 °C TO +80 °C
Bearing Type	Ball
Load Capacity (kg)	775
Tread (mm)	50
Plate Size (mm)	135 x 110
Hole Centres (mm)	105 x 75/80
Top Plate Thickness (mm)	6
Fork Thickness (mm)	5
To Suit Fixing Bolt (mm)	10