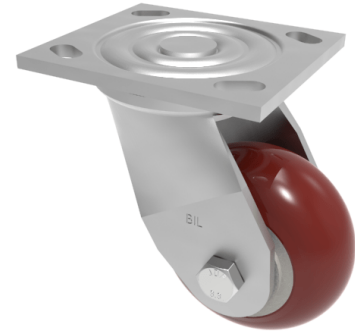


## Ergonomic Polyurethane Plate Swivel Castor 100mm 350kg Load

**Product code: BZJ100RPTABJ/USA**

Fabricated swivel castor with a top plate fixing fitted with an ergonomic brown polyurethane tyre on aluminium centred wheel with ball bearings. Wheel diameter 100mm, tread width 50mm, overall height 143mm, top plate 115mm x 102mm, Hole centres 92mm x 67mm and 76mm x 76mm. Load capacity 350kg.



Diameter (mm)	100
Fixing Option	Plate
Castor Type	Swivel
Bearing Type	Ball
Height (mm)	143
Plate Size (mm)	115 x 102
Hole Centres (mm)	76/92 x 76/67
To Suit Fixing Bolt (mm)	10
Wheel Material	Polyurethane on Aluminium
Colour / Shore Hardness	Brown Ergonomic Polyurethane on Aluminium Rim / 95 Shore A
Temperature Resistance	-20 °C TO +80 °C
Top Plate Thickness (mm)	5.5
Fork Thickness (mm)	5.5
Swivel Radius (mm)	90
Load Capacity (kg)	350
Tread (mm)	50

### BIL GROUP LTD

Porte Marsh Road, Calne, Wiltshire, SN11 9BW

Registered in England No: 2603821

VAT Reg: GB572705729

