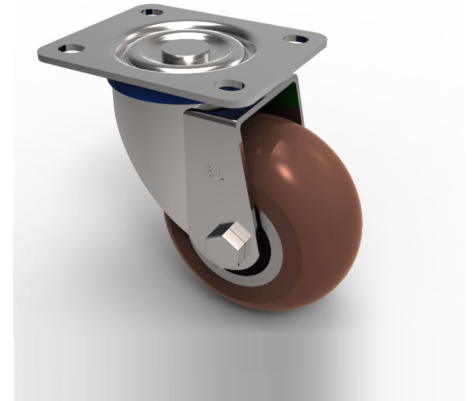


Ergonomic Polyurethane Plate Swivel Castor 125mm 450kg Load

Product code: BZH125RPTABJ

Pressed steel swivel castor with a flat top plate fixing fitted with an ergonomic polyurethane tyred aluminium centered wheel with ball bearing. Wheel diameter 125mm, tread width 50mm, overall height 155mm, plate size 105mm x 86mm, hole centres 80mm x 60mm. Load capacity 400kg.



Diameter (mm)	125
Castor Type	Swivel
Fixing Option	Plate
Height (mm)	155
Wheel Material	Polyurethane on Aluminium
Colour / Shore Hardness	Brown Ergonomic Polyurethane on Aluminium Rim / 95 Shore A
Temperature Resistance	-20 °C TO +80 °C
Bearing Type	Ball
Load Capacity (kg)	450
Tread (mm)	50
Swivel Radius (mm)	104
Plate Size (mm)	105 x 86
Hole Centres (mm)	80 X 60
Top Plate Thickness (mm)	4
Fork Thickness (mm)	4
To Suit Fixing Bolt (mm)	8

BIL GROUP LTD

Porte Marsh Road, Calne, Wiltshire, SN11 9BW

Registered in England No: 2603821

VAT Reg: GB572705729

