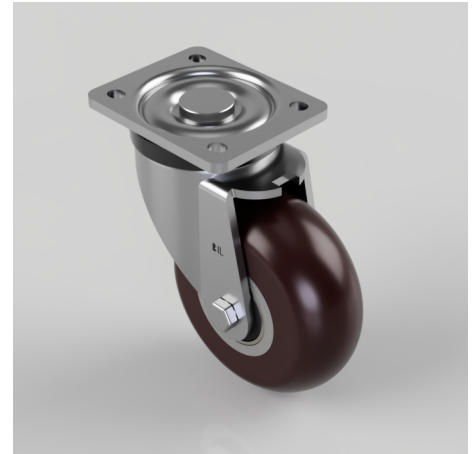


Ergonomic Polyurethane Plate Swivel Castor 125mm 450kg Load

Product code: BZXP125RPTABJ

Pressed steel swivel castor with a top plate fixing fitted with an ergonomic polyurethane round profile wheel with aluminium centre with ball bearings. Wheel diameter 125mm, tread width 50mm, overall height 165mm, plate size 105 mm x 86mm, hole centres 80/77mm x 60mm Load capacity 450kg.



Diameter (mm)	125
Castor Type	Swivel
Fixing Option	Plate
Height (mm)	165
Wheel Material	Polyurethane on Aluminium
Colour / Shore Hardness	Brown Ergonomic Polyurethane on Aluminium Rim / 95 Shore A
Temperature Resistance	-20 °C TO +80 °C
Bearing Type	Ball
Load Capacity (kg)	450
Tread (mm)	50
Swivel Radius (mm)	108
Plate Size (mm)	105 x 86
Hole Centres (mm)	80 / 77 X 60
Top Plate Thickness (mm)	6
Fork Thickness (mm)	5
To Suit Fixing Bolt (mm)	8