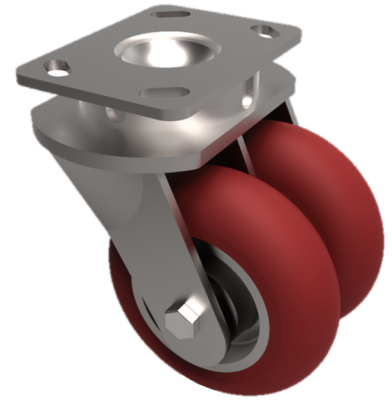


Ergonomic Polyurethane Plate Swivel Castor 125mm 900kg Load

Product code: 2BZK125RPTABJ

Twin wheel fabricated swivel castor with a top plate fixing fitted with 2 brown ergonomic polyurethane tyred aluminium centred wheel with a ball bearing. Wheel diameter 125mm, tread width 50mm, overall height 177mm, plate size 150mm x 110mm, hole centres 105mm x 80mm or 121mm x 59mm. Load capacity 900kg.



Diameter (mm)	125
Fixing Option	Plate
Castor Type	Swivel
Bearing Type	Ball
Plate Size (mm)	150 x 110
Hole Centres (mm)	105/121 x 80/59
Height (mm)	177
Swivel Radius (mm)	127
To Suit Fixing Bolt (mm)	12
Wheel Material	Polyurethane on Cast Iron
Colour / Shore Hardness	Brown Ergonomic Polyurethane on Aluminium Rim / 95 Shore A
Temperature Resistance	"-20 °C TO +80 °C
Tread (mm)	2 x 50
Load Capacity (kg)	900
Top Plate Thickness (mm)	7.5
Fork Thickness (mm)	6

BIL GROUP LTD

Porte Marsh Road, Calne, Wiltshire, SN11 9BW

Registered in England No: 2603821

VAT Reg: GB572705729

