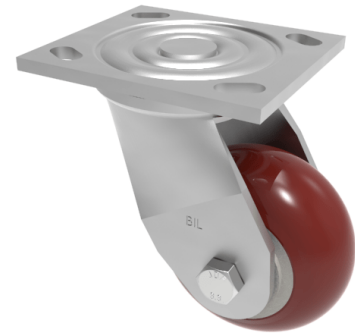


Ergonomic Polyurethane Plate Swivel Castor 150mm 575kg Load

Product code: BZJ150RPTABJ/USA



Fabricated swivel castor with a top plate fixing fitted with a round profile polyurethane on aluminium centred wheel with a ball bearings. Wheel diameter 150mm, tread width 50mm, overall height 190mm, top plate 115mm x 102mm, hole centres 92mm x 67mm and 76mm x 76mm. Load capacity 575kg.

Diameter (mm)	150
Fixing Option	Plate
Castor Type	Swivel
Bearing Type	Ball
Height (mm)	190
Plate Size (mm)	115 x 102
Hole Centres (mm)	76/92 x 76/67
To Suit Fixing Bolt (mm)	10
Wheel Material	Polyurethane on Aluminium
Colour / Shore Hardness	Brown Ergonomic Polyurethane on Aluminium Rim / 95 Shore A
Temperature Resistance	-20 °C TO +80 °C
Top Plate Thickness (mm)	5.5
Fork Thickness (mm)	5.5
Swivel Radius (mm)	126
Load Capacity (kg)	575
Tread (mm)	50

BIL GROUP LTD

Porte Marsh Road, Calne, Wiltshire, SN11 9BW

Registered in England No: 2603821

VAT Reg: GB572705729

