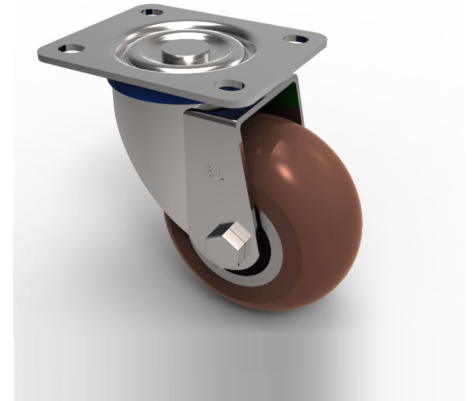


## Ergonomic Polyurethane Plate Swivel Castor 200mm 500kg Load

**Product code: BZPH200RPTABJ**

Pressed steel swivel castor with a top plate fixing fitted with a round ergonomic polyurethane tyred aluminium centred wheel with ball bearings. Wheel diameter 200, tread width 50mm, overall height 238mm, plate size 135mm x 110mm, hole centres 105mm x 80mm/75mm. Load capacity 500kg.



Diameter (mm)	200
Castor Type	Swivel
Fixing Option	Plate
Height (mm)	238
Wheel Material	Polyurethane on Aluminium
Colour / Shore Hardness	Brown Ergonomic Polyurethane on Aluminium Rim / 95 Shore A
Temperature Resistance	-20 °C TO +80 °C
Bearing Type	Ball
Load Capacity (kg)	500
Tread (mm)	50
Swivel Radius (mm)	153
Plate Size (mm)	135 x 110
Hole Centres (mm)	105 x 80/75
Top Plate Thickness (mm)	5
Fork Thickness (mm)	5
To Suit Fixing Bolt (mm)	10