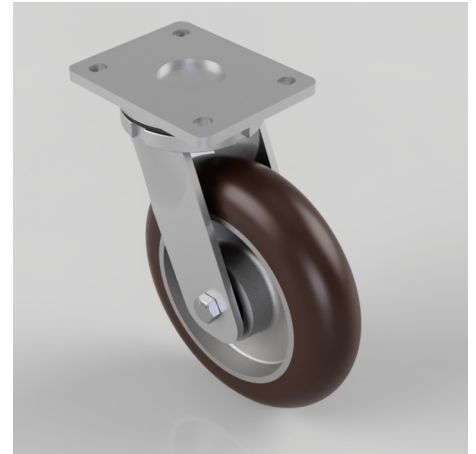


## Ergonomic Polyurethane Plate Swivel Castor 200mm 775kg Load

**Product code: BZSAB200RPTABJ**

Fabricated yellow ROHS zinc plated swivel castor with plate fixing fitted with a brown 95 shore A polyurethane tyre aluminium centred wheel centred wheel with ball bearings. Wheel diameter 200mm, tread width 50mm, overall height 250mm, plate size 138mm x 110mm, hole centres 105mm x 80mm/75mm. Load capacity 775kg



Diameter (mm)	200
Fixing Option	Plate
Castor Type	Swivel
Bearing Type	Ball
Height (mm)	250
Plate Size (mm)	138 x 110
Hole Centres (mm)	105 x 80
To Suit Fixing Bolt (mm)	10
Wheel Material	Polyurethane on Aluminium
Colour / Shore Hardness	Brown Ergonomic Polyurethane on Aluminium Rim / 95 Shore A
Temperature Resistance	-20 °C TO +80 °C
Top Plate Thickness (mm)	8
Fork Thickness (mm)	6
Swivel Radius (mm)	155
Load Capacity (kg)	775
Tread (mm)	50