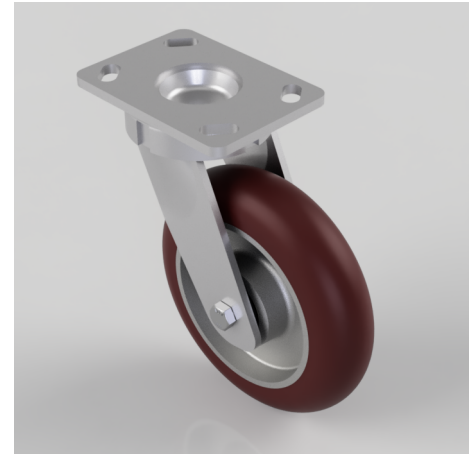


## Ergonomic Polyurethane Plate Swivel Castor 200mm 775kg Load

**Product code: BZK200RPTABJ**

Fabricated swivel castor with a top plate fixing fitted with a 95 shore A ergonomic polyurethane wheel on an aluminium centre with ball bearings. Wheel diameter 200mm, tread width 50mm, overall height 250mm, top plate 150mm x 110mm, hole centres 105mm x 80mm or 121mm x 59mm. Load capacity 775kg



|                          |  |
|--------------------------|--|
| Diameter (mm)            | 200  |
| Fixing Option            | Plate  |
| Castor Type              | Swivel   |
| Bearing Type             | Ball   |
| Height (mm)              | 250  |
| Plate Size (mm)          | 150 x 110  |
| Hole Centres (mm)        | 105/121 x 80/59  |
| To Suit Fixing Bolt (mm) | 12   |
| Wheel Material           | Polyurethane on Aluminium                                  |
| Colour / Shore Hardness  | Brown Ergonomic Polyurethane on Aluminium Rim / 95 Shore A |
| Temperature Resistance   | -20 °C TO +80 °C   |
| Top Plate Thickness (mm) | 7.5  |
| Fork Thickness (mm)      | 6  |
| Swivel Radius (mm)       | 165  |
| Load Capacity (kg)       | 775  |
| Tread (mm)               | 50   |

### BIL GROUP LTD

Porte Marsh Road, Calne, Wiltshire, SN11 9BW

Registered in England No: 2603821

VAT Reg: GB572705729

