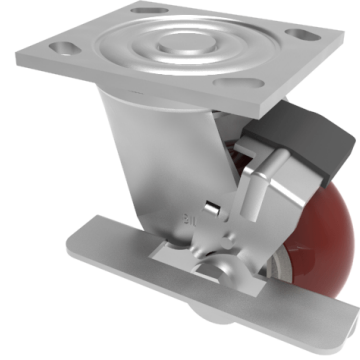


## Ergonomic Polyurethane Plate Swivel Castor Brake 100mm 350kg Load

**Product code: BZJ100RPTABJBK/USA**

Fabricated swivel castor with a top plate fixing fitted with an ergonomic brown polyurethane tyre on aluminium centred wheel with ball bearings and side mounted wheel brake. Wheel diameter 100mm, tread width 50mm, overall height 143mm, top plate 115mm x 102mm, Hole centres 92mm x 67mm and 76mm x 76mm. Load capacity 350kg.



Diameter (mm)	100
Fixing Option	Plate
Castor Type	Swivel with Wheel Brake
Bearing Type	Ball
Height (mm)	143
Plate Size (mm)	115 x 102
Hole Centres (mm)	76/92 x 76/67
To Suit Fixing Bolt (mm)	10
Wheel Material	Polyurethane on Aluminium
Colour / Shore Hardness	Brown Ergonomic Polyurethane on Aluminium Rim / 95 Shore A
Temperature Resistance	-20 °C TO +80 °C
Top Plate Thickness (mm)	5.5
Fork Thickness (mm)	5.5
Swivel Radius (mm)	90
Load Capacity (kg)	350
Tread (mm)	50

### BIL GROUP LTD

Porte Marsh Road, Calne, Wiltshire, SN11 9BW

Registered in England No: 2603821

VAT Reg: GB572705729

