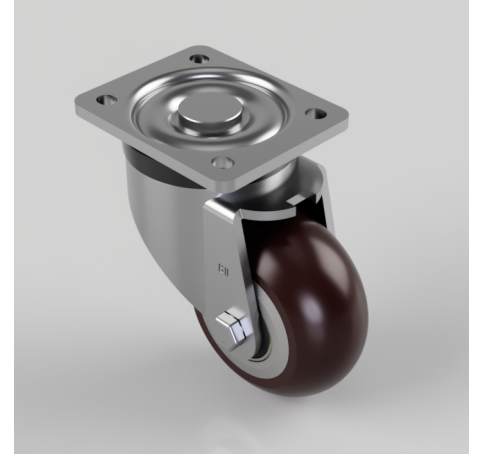


Ergonomic Polyurethane Plate Swivel Castor Brake 100mm 350kg Load

Product code: BZXP100RPTABJ

Pressed steel swivel castor with a top plate fixing fitted with an ergonomic polyurethane round profile wheel with aluminium centre with ball bearings. Wheel diameter 100mm, tread width 48mm, overall height 140mm, plate size 105 mm x 86mm, hole centres 80/77mm x 60mm Load capacity 350kg.



Diameter (mm)	100
Castor Type	Swivel
Fixing Option	Plate
Height (mm)	140
Wheel Material	Polyurethane on Aluminium
Colour / Shore Hardness	Brown Ergonomic Polyurethane on Aluminium Rim / 95 Shore A
Temperature Resistance	-20 °C TO +80 °C
Bearing Type	Ball
Load Capacity (kg)	350
Tread (mm)	48
Swivel Radius (mm)	95
Plate Size (mm)	105 x 86
Hole Centres (mm)	80 / 77 X 60
Top Plate Thickness (mm)	6
Fork Thickness (mm)	5
To Suit Fixing Bolt (mm)	8