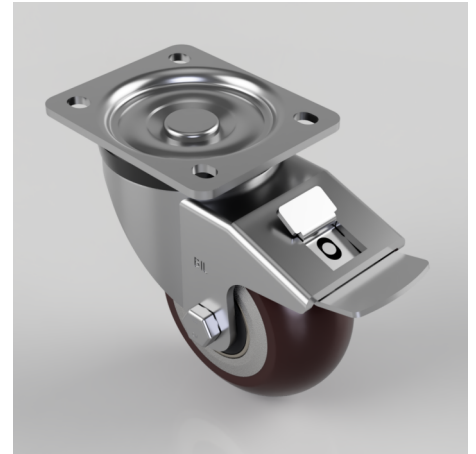


Ergonomic Polyurethane Plate Swivel Castor Brake 100mm 350kg Load

Product code: BZH100RPTABJSWB

Pressed steel swivel castor with a flat top plate fixing fitted with an ergonomic polyurethane tyred aluminium centered wheel with ball bearing and total lock brake. Wheel diameter 100mm, tread width 48mm, overall height 128mm, plate size 105mm x 86mm, hole centres 80mm x 60mm. Load capacity 350kg.



Diameter (mm)	100
Castor Type	Swivel with Total Lock Brake
Fixing Option	Plate
Colour / Shore Hardness	Brown Ergonomic Polyurethane on Aluminium Rim / 95 Shore A
Height (mm)	128
Wheel Material	Polyurethane on Aluminium
Temperature Resistance	-20 °C TO +80 °C
Bearing Type	Ball
Load Capacity (kg)	350
Tread (mm)	48
Swivel Radius (mm)	120
Plate Size (mm)	105 x 86
Hole Centres (mm)	80 X 60
Top Plate Thickness (mm)	4
Fork Thickness (mm)	4
To Suit Fixing Bolt (mm)	8