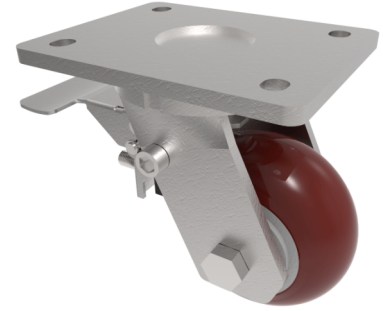


Ergonomic Polyurethane Plate Swivel Castor Brake 100mm 350kg Load

Product code: BZMJ100RPTABJSWB



Fabricated white zinc ROHS plated swivel castor with a top plate fixing fitted with a ergonomic brown polyurethane tyred on aluminium centred wheel with ball bearings and total lock brake. Wheel diameter 100mm, tread width 50mm, overall height 143mm, top plate 138mm x 110mm, Hole centres 105mm x 80mm/75mm. Load capacity 350kg.

Diameter (mm)	100
Fixing Option	Plate
Castor Type	Swivel with Total Lock Brake
Bearing Type	Ball
Height (mm)	143
Plate Size (mm)	138 x 110
Hole Centres (mm)	105 x 80/75
To Suit Fixing Bolt (mm)	10
Wheel Material	Polyurethane on Aluminium
Colour / Shore Hardness	Brown Ergonomic Polyurethane on Aluminium Rim / 95 Shore A
Temperature Resistance	-20 °C TO +80 °C
Top Plate Thickness (mm)	7
Fork Thickness (mm)	6
Swivel Radius (mm)	93
Load Capacity (kg)	350
Tread (mm)	50