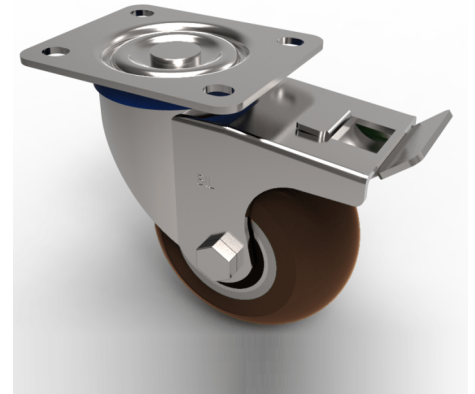


## Ergonomic Polyurethane Plate Swivel Castor Brake 125mm 400kg Load

**Product code: BZWH125RPTABJSWB**

Pressed steel swivel castor with a top plate fixing fitted with a brown ergonomic polyurethane tyred on a aluminium centred wheel with a ball bearing and total lock brake. Wheel diameter 125mm, tread width 50mm, overall height 165mm, top plate 105mm x 86mm, hole centres 80mm x 60mm. Load capacity 400kg.



|                          |  |
|--------------------------|--|
| Diameter (mm)            | 125  |
| Castor Type              | Swivel with Total Lock Brake                               |
| Fixing Option            | Plate  |
| Height (mm)              | 165  |
| Wheel Material           | Polyurethane on Aluminium                                  |
| Colour / Shore Hardness  | Brown Ergonomic Polyurethane on Aluminium Rim / 95 Shore A |
| Temperature Resistance   | -20 °C TO +80 °C   |
| Bearing Type             | Ball   |
| Load Capacity (kg)       | 400  |
| Tread (mm)               | 50   |
| Swivel Radius (mm)       | 137  |
| Plate Size (mm)          | 105 x 86   |
| Hole Centres (mm)        | 80 X 60  |
| Top Plate Thickness (mm) | 4  |
| Fork Thickness (mm)      | 3.5  |
| To Suit Fixing Bolt (mm) | 10   |

### BIL GROUP LTD

Porte Marsh Road, Calne, Wiltshire, SN11 9BW

Registered in England No: 2603821

VAT Reg: GB572705729

