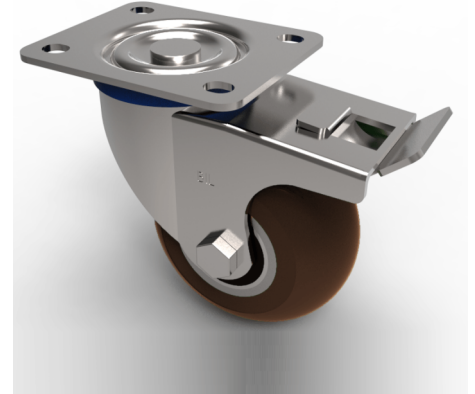


Ergonomic Polyurethane Plate Swivel Castor Brake 125mm 450kg Load

Product code: BZPH125RPTABJSWB

Pressed steel swivel castor with a flat top plate fixing fitted with an ergonomic polyurethane tyred aluminium centered wheel with ball bearing and total lock brake. Wheel diameter 125mm, tread width 50mm, overall height 155mm, plate size 135mm x 110mm, hole centres 105mm x 80/75mm. Load capacity 450kg.



Diameter (mm)	125
Castor Type	Swivel with Total Lock Brake
Fixing Option	Plate
Height (mm)	158
Wheel Material	Polyurethane on Aluminium
Colour / Shore Hardness	Brown Ergonomic Polyurethane on Aluminium Rim / 95 Shore A
Temperature Resistance	-20 °C TO +80 °C
Bearing Type	Ball
Load Capacity (kg)	450
Tread (mm)	50
Swivel Radius (mm)	125
Plate Size (mm)	135 x 110
Hole Centres (mm)	105 x 80/75
Top Plate Thickness (mm)	4
Fork Thickness (mm)	4
To Suit Fixing Bolt (mm)	10

BIL GROUP LTD

Porte Marsh Road, Calne, Wiltshire, SN11 9BW

Registered in England No: 2603821

VAT Reg: GB572705729

