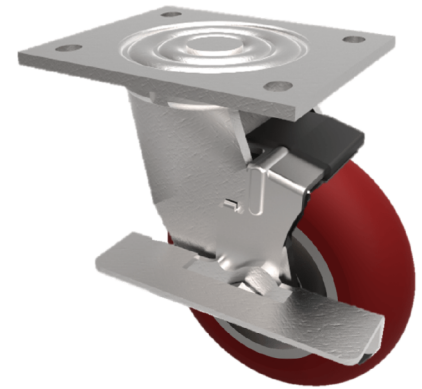


Ergonomic Polyurethane Plate Swivel Castor Brake 150mm 500kg Load

Product code: BZEJ150RPTABJBK



Fabricated swivel castor with top plate fixing fitted with a brown 85 shore A Ergonomic polyurethane tyred on an aluminium centred wheel with ball bearing and side wheel brake. Wheel diameter 150mm, tread width 50mm, overall height 190mm plate size 135mmx 110mm, hole centers 105mm x 80mm. Load capacity 500kg.

Diameter (mm)	150
Fixing Option	Plate
Castor Type	Swivel with Wheel Brake
Bearing Type	Ball
Height (mm)	190
Plate Size (mm)	135 x 110
Hole Centres (mm)	105 x 80
To Suit Fixing Bolt (mm)	12
Wheel Material	Polyurethane on Aluminium
Colour / Shore Hardness	Brown Ergonomic Polyurethane on Aluminium Rim / 95 Shore A
Temperature Resistance	-20 °C TO +80 °C
Top Plate Thickness (mm)	5.5
Fork Thickness (mm)	5.5
Swivel Radius (mm)	122
Load Capacity (kg)	500
Tread (mm)	50