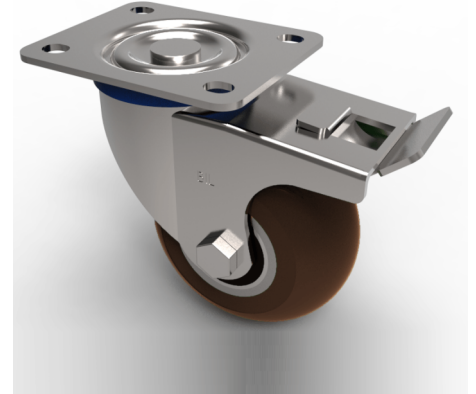


Ergonomic Polyurethane Plate Swivel Castor Brake 150mm 575kg Load

Product code: BZSPH150RPTABJSWB

Pressed steel swivel Swivel Castor Brake castor with a top plate fixing fitted with a ergonomic brown 95 shore A polyurethane tyre on aluminium centred wheel with ball bearings. Wheel diameter 150mm, tread width 50mm, overall height 190mm, top plate 135mm x 110mm, hole centres 105mm x 80mm/75mm. Load capacity 575kg



Diameter (mm)	150
Castor Type	Swivel with Total Lock Brake
Fixing Option	Plate
Height (mm)	190
Wheel Material	Polyurethane on Aluminium
Colour / Shore Hardness	Brown Ergonomic Polyurethane on Aluminium Rim / 95 Shore A
Temperature Resistance	-20 °C TO +80 °C
Bearing Type	Ball
Load Capacity (kg)	575
Tread (mm)	50
Swivel Radius (mm)	167
Plate Size (mm)	135 x 110
Hole Centres (mm)	105 x 80/75
Top Plate Thickness (mm)	5
Fork Thickness (mm)	5
To Suit Fixing Bolt (mm)	10

BIL GROUP LTD

Porte Marsh Road, Calne, Wiltshire, SN11 9BW

Registered in England No: 2603821

VAT Reg: GB572705729

