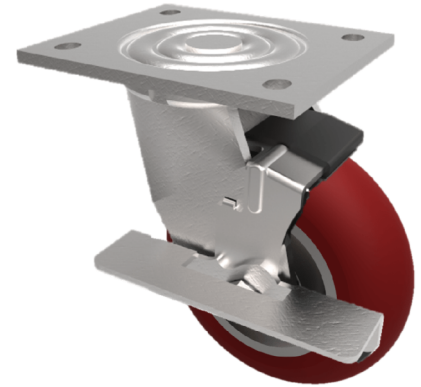


Ergonomic Polyurethane Plate Swivel Castor Brake 150mm 575kg Load

Product code: BZJ150RPTABJBK

Fabricated swivel castor with a top plate fixing fitted with a round profile polyurethane on aluminium centred wheel with ball bearings and side fitting wheel brake. Wheel diameter 150mm, tread width 50mm, overall height 190mm, top plate 135mm x 110mm, hole centres 105mm x 80mm. Load capacity 575kg.



| | |
|--------------------------|--|
| Diameter (mm) | 150 |
| Fixing Option | Plate |
| Castor Type | Swivel with Wheel Brake |
| Bearing Type | Ball |
| Height (mm) | 190 |
| Plate Size (mm) | 135 x 110 |
| Hole Centres (mm) | 105 x 80 |
| To Suit Fixing Bolt (mm) | 10 |
| Wheel Material | Polyurethane on Aluminium |
| Colour / Shore Hardness | Brown Ergonomic Polyurethane on Aluminium Rim / 95 Shore A |
| Temperature Resistance | -20 °C TO +80 °C |
| Top Plate Thickness (mm) | 5.5 |
| Fork Thickness (mm) | 5.5 |
| Swivel Radius (mm) | 132 |
| Load Capacity (kg) | 575 |
| Tread (mm) | 50 |

BIL GROUP LTD

Porte Marsh Road, Calne, Wiltshire, SN11 9BW

Registered in England No: 2603821

VAT Reg: GB572705729

