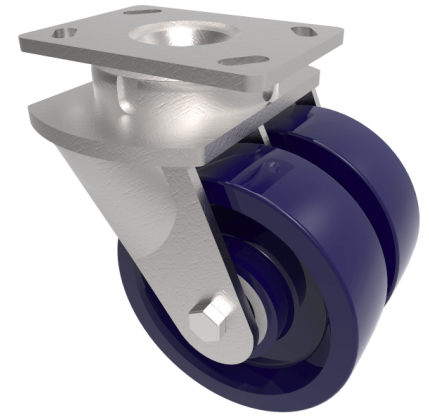


## Ergonomic Solid Elastomer Plate Swivel Castor 150mm 1350kg Load

**Product code: 2BZK150PKBJ**

Fabricated swivel castor with a top plate fixing fitted with 2 x solid elastomer wheels with ball bearings. Wheel diameter 150mm, tread width 50mm x 2, overall height 200mm, top plate 150mm x 110mm, hole centres 105mm x 80mm or 121mm x 59mm. Load capacity 1350kg.



Diameter (mm)	150
Fixing Option	Plate
Castor Type	Swivel
Bearing Type	Ball
Plate Size (mm)	150 x 110
Hole Centres (mm)	105/121 x 80/59
Height (mm)	200
Swivel Radius (mm)	144
To Suit Fixing Bolt (mm)	12
Wheel Material	Polyurethane on Aluminium
Colour / Shore Hardness	Blue Solid Elastomer on Aluminium Rim / 73 Shore D
Temperature Resistance	&quot;-30 °C TO +80 °C
Tread (mm)	2 x 50
Load Capacity (kg)	1350
Top Plate Thickness (mm)	7.5
Fork Thickness (mm)	6

### BIL GROUP LTD

Porte Marsh Road, Calne, Wiltshire, SN11 9BW

Registered in England No: 2603821

VAT Reg: GB572705729

