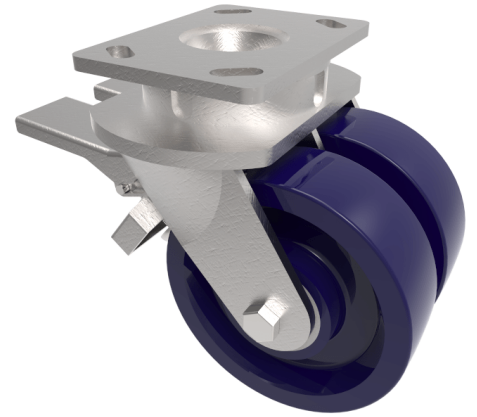


## Ergonomic Solid Elastomer Plate Swivel Castor Brake 125mm 1000kg Load

**Product code: 2BZK125PKBJDBR**



Twin wheeled fabricated swivel castor with a top plate fixing fitted with 2 x solid elastomer tyre aluminium wheels with ball journal bearings and double wheel brake. Wheel diameter 2 x 125mm, tread width 2 x 50mm, overall height 177mm, top plate 150mm x 110mm, hole centres 105mm x 80mm or 121mm x 59mm. Load capacity 1000kg.

Diameter (mm)	125
Fixing Option	Plate
Castor Type	Swivel with Wheel Brake
Bearing Type	Ball
Plate Size (mm)	150 x 110
Hole Centres (mm)	105/121 x 80/59
Height (mm)	177
Swivel Radius (mm)	127
To Suit Fixing Bolt (mm)	12
Wheel Material	Polyurethane on Aluminium
Colour / Shore Hardness	Blue Solid Elastomer on Aluminium Rim / 73 Shore D
Temperature Resistance	&quot;-30 °C TO +80 °C
Tread (mm)	2 x 50
Load Capacity (kg)	1000
Top Plate Thickness (mm)	7.5
Fork Thickness (mm)	6

### BIL GROUP LTD

Porte Marsh Road, Calne, Wiltshire, SN11 9BW

Registered in England No: 2603821

VAT Reg: GB572705729

