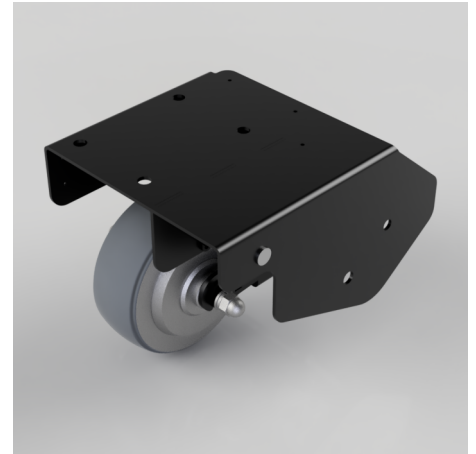


Esense Electric Up Drive Wheel Plate 145mm 600kg Load Capacity

Product code: ESUPPD/SH/9AH

Transform heavy lifting into healthy movement with the Esense Up Drive Wheel, ideal for indoor use on solid, industrial surfaces. Promote healthy working by reducing physical strain.

- Power-assisted forward and backwards driving with the ability to raise the Drive Wheel to move sideways without power assist
- Rechargeable battery with automatic switch off function
- Sensor handles for easy movement
- Water resistant connectors
- 600kg load capacity



Wheel Material	Polyurethane on Aluminium
Diameter (mm)	145
Tread (mm)	43
Colour / Shore Hardness	Black Polyurethane on Aluminium Rim / 64 Shore A
Temperature Resistance	-20°C - 50°C Driving, 10°C - 40°C Charging
Load Capacity (kg)	600
Height (mm)	160 - 210
Plate Size (mm)	194 x 200
Hole Centres (mm)	77 x 105
Max Speed	6km/h
Battery	24V 9Ah
Charge Time	4.5hr
Wheel Torque	Max 15Nm
Threshold (mm)	20

BIL GROUP LTD

Porte Marsh Road, Calne, Wiltshire, SN11 9BW

Registered in England No: 2603821

VAT Reg: GB572705729

