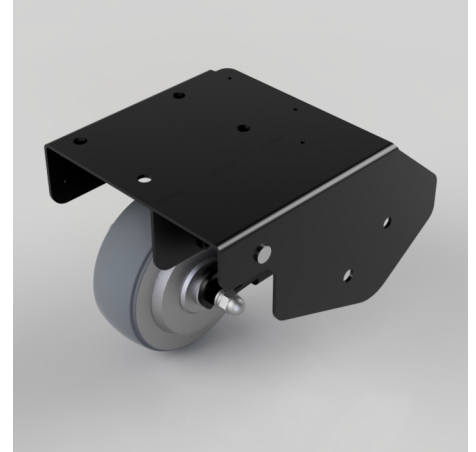


Esense Up - Electric Drive Castor Wheel: Plate, 145mm dia, 600kg Load

Product code: ESUPPD/SH/9AH

Transform heavy lifting into healthy movement with the Esense Up, an electric drive castor wheel (145mm) with a raise function. Ideal for indoor use on solid, industrial surfaces.

- Reduce effort: Power-assisted forward & backwards driving
- Raise the Drive Wheel to move sideways
- Rechargeable battery with auto switch-off function
- Simple to use & move with the sensor handles
- Water resistant connectors
- 600kg load capacity



Wheel Material	Polyurethane on Aluminium
Diameter (mm)	145
Tread (mm)	43
Colour / Shore Hardness	Black Polyurethane on Aluminium Rim / 64 Shore A
Temperature Resistance	-20°C - 50°C Driving, 10°C - 40°C Charging
Load Capacity (kg)	600
Height (mm)	160 - 210
Plate Size (mm)	194 x 200
Hole Centres (mm)	77 x 105
Max Speed	6km/h
Battery	24V 9Ah
Charge Time	4.5hr
Wheel Torque	Max 15Nm
Threshold (mm)	20

BIL GROUP LTD

Porte Marsh Road, Calne, Wiltshire, SN11 9BW

Registered in England No: 2603821

VAT Reg: GB572705729

