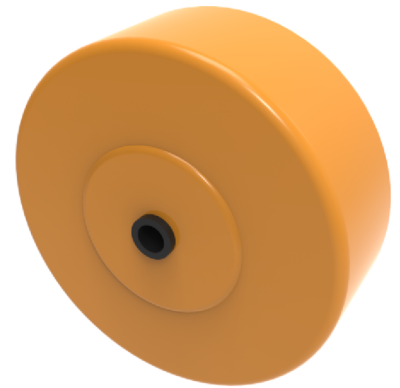


Epoxy Resin 100mm Ball Bearing Wheel 160kg Load

Product code: WAN100BJ/250/HD

250C Orange epoxy resin wheel with ball bearing. Diameter 100mm, tread width 38mm, bore size 8mm, hub length 45mm. Load capacity 160kg. Max temperature continuous 250c Max temperature intermitenet 285c.



Load Capacity (kg)	160
Wheel Material	Epoxy Resin
Diameter (mm)	100
Bearing Type	Ball
Hub Width (mm)	45
Bore Size (mm)	8
Tread (mm)	38
Colour / Shore Hardness	Orange High Temperature Epoxy Resin
Temperature Resistance	-20 °C to +250 °C

BIL GROUP LTD

Porte Marsh Road, Calne, Wiltshire, SN11 9BW

Registered in England No: 2603821

VAT Reg: GB572705729

