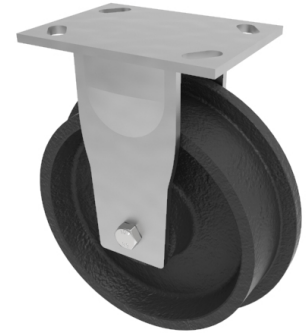


Flanged Cast Iron Fixed Castor Plate 200mm 1500kg

Product code: BZKF200CSFBJ



Fabricated fixed castor with a top plate fixing fitted with a single flanged cast iron wheel with ball bearings. Wheel diameter 200mm (overall 230mm) tread width 46mm (overall flange 58mm) overall height 250mm, top plate 150mm x 110mm, hole centres 105mm x 80mm or 121mm x 59mm. Load capacity 1500kg.

Fixing Option	Plate
Castor Type	Fixed
Load Capacity (kg)	1500
Wheel Material	Cast Iron
Diameter (mm)	200
Flanged Diameter (mm)	230
Bearing Type	Ball
Colour / Shore Hardness	Black Painted Cast Iron
Hole Centres (mm)	105/121 x 80/59
To Suit Fixing Bolt (mm)	12
Total Width (mm)	58
Top Plate Thickness (mm)	7.5
Fork Thickness (mm)	6
Tread (mm)	46
Temperature Resistance	-30 °C TO +80 °C

BIL GROUP LTD

Porte Marsh Road, Calne, Wiltshire, SN11 9BW

Registered in England No: 2603821

VAT Reg: GB572705729

