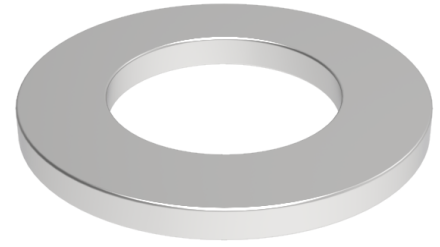


Flat washer 10mm internal, 15mm outer x 2mm thick

Product code: WM10X15X2

Flat zinc plated washer 10mm internal, 15mm outside diameter x 2mm thick



| | |
|-----------------------|----|
| Bore Size (mm) | 10 |
| Outside Diameter (mm) | 15 |
| Depth (mm) | 2 |

BIL GROUP LTD

Porte Marsh Road, Calne, Wiltshire, SN11 9BW

Registered in England No: 2603821

VAT Reg: GB572705729

