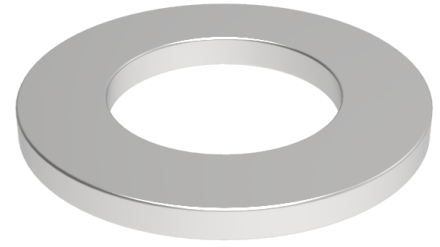


Flat washer 10mm internal, 20mm outer x 2mm thick

Product code: WM10X21X2

Flat zinc plated washer 10mm internal, 20mm outside diameter x 2mm thick



Bore Size (mm)	10
Outside Diameter (mm)	20
Depth (mm)	2

BIL GROUP LTD

Porte Marsh Road, Calne, Wiltshire, SN11 9BW

Registered in England No: 2603821

VAT Reg: GB572705729

