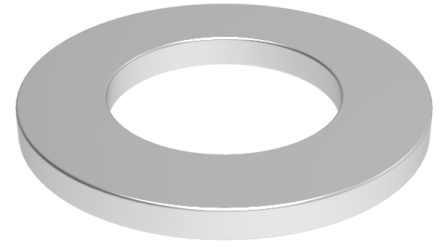


## Flat washer 10mm internal, 30mm outer x 1mm thick

**Product code: WM10X30X10Z**



Flat zinc plated washer 10mm internal, 30mm outside diameter x 1mm thick

Bore Size (mm)	10
Outside Diameter (mm)	30
Depth (mm)	1

### BIL GROUP LTD

Porte Marsh Road, Calne, Wiltshire, SN11 9BW

Registered in England No: 2603821

VAT Reg: GB572705729

