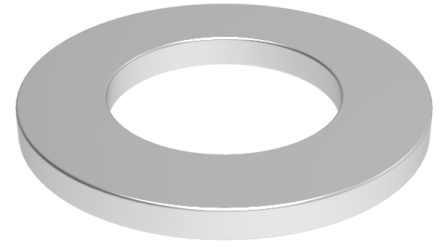


Flat washer 12mm internal, 24mm outer x 1.6mm thick

Product code: WM12X24X1.6Z



Flat zinc plated washer 12mm internal, 24mm outside diameter x 1.6mm thick

Bore Size (mm)	12
Outside Diameter (mm)	24
Depth (mm)	1.6

BIL GROUP LTD

Porte Marsh Road, Calne, Wiltshire, SN11 9BW

Registered in England No: 2603821

VAT Reg: GB572705729

