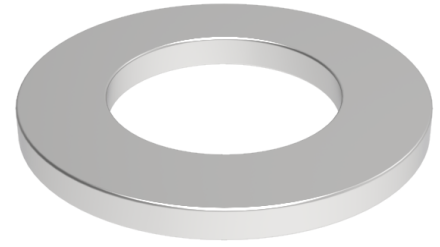


## Flat washer 12mm internal, 25mm outer x 5mm thick

**Product code: WM12X25X5**

Flat zinc plated washer 12mm internal, 25mm outside diameter x 5mm thick



Bore Size (mm)	12
Outside Diameter (mm)	25
Depth (mm)	5

### BIL GROUP LTD

Porte Marsh Road, Calne, Wiltshire, SN11 9BW

Registered in England No: 2603821

VAT Reg: GB572705729

