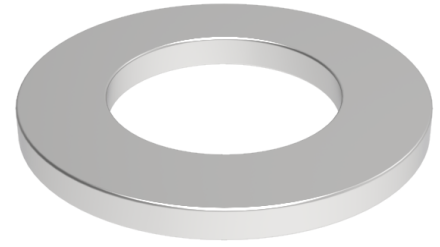


Flat washer 12mm internal, 50mm outer x 1.5mm thick

Product code: WM12X50X1.5Z

Flat zinc plated washer 12mm internal, 50mm outside diameter x 1.5mm thick



Bore Size (mm)	12
Outside Diameter (mm)	50
Depth (mm)	1.5

BIL GROUP LTD

Porte Marsh Road, Calne, Wiltshire, SN11 9BW

Registered in England No: 2603821

VAT Reg: GB572705729

