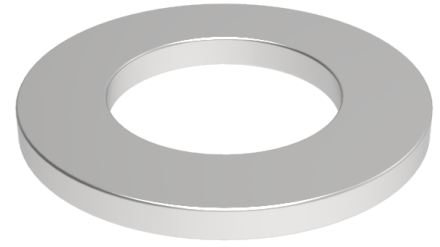


Flat washer 20mm internal, 32mm outer x 15mm thick

Product code: WM20X32X15



Flat zinc plated washer 20mm internal, 32mm outside diameter x 15mm thick (Catalogue SK WM20X35X15)

Bore Size (mm)	20
Outside Diameter (mm)	32
Depth (mm)	13

BIL GROUP LTD

Porte Marsh Road, Calne, Wiltshire, SN11 9BW

Registered in England No: 2603821

VAT Reg: GB572705729

