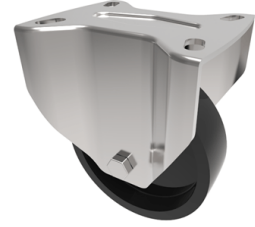


## Glass Filled Technopolymer Resin Plate Fixed Castor 100mm 180kg Load

**Product code: BZMMF100GFPBJ**



Pressed steel fixed castor with a top plate fixing fitted with a 280C grey techno polymer reinforced with glass fibre wheel with a single ball bearing and retaining caps. Wheel diameter 100mm, tread width 32mm, overall height 128mm, top plate 105mm x 85mm, hole centres 80mm x 60mm Load capacity 180kg.

Diameter (mm)	100
Fixing Option	Plate
Castor Type	Fixed
Plate Size (mm)	105 X 85
Hole Centres (mm)	80 X 60
To Suit Fixing Bolt (mm)	8
Height (mm)	128
Bearing Type	Ball
Wheel Material	Technopolymer
Colour / Shore Hardness	Black High Temperature Technopolymer
Temperature Resistance	-40 °C to +280 °C
Load Capacity (kg)	180
Tread (mm)	32
Top Plate Thickness (mm)	2
Fork Thickness (mm)	2