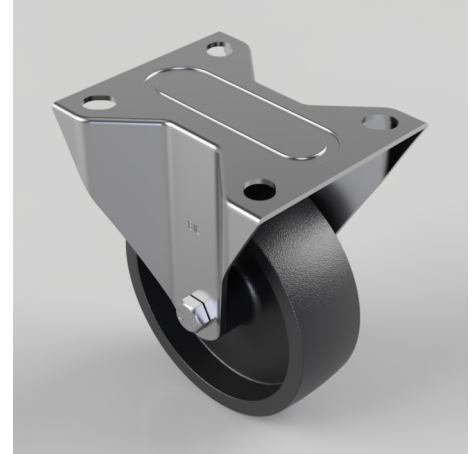


Glass Filled Technopolymer Resin Plate Fixed Castor 100mm 180kg Load

Product code: BZMMF100GFP

Pressed steel fixed castor with a top plate fixing fitted with a 280C grey technopolymer reinforced with glass fiber wheel with a plain bore and a stainless steel axle tube. Wheel diameter 100mm, tread width 32mm, overall height 128mm, top plate 105mm x 85mm, hole centres 80mm x 60mm Load capacity 180kg. (BIL always recommend using a PTFE bush in case of wheel scream)



| | |
|--------------------------|--------------------------------------|
| Diameter (mm) | 100 |
| Fixing Option | Plate |
| Castor Type | Fixed |
| Plate Size (mm) | 105 X 85 |
| Hole Centres (mm) | 80 X 60 |
| To Suit Fixing Bolt (mm) | 8 |
| Height (mm) | 128 |
| Bearing Type | Plain |
| Wheel Material | Technopolymer |
| Colour / Shore Hardness | Black High Temperature Technopolymer |
| Temperature Resistance | -40 °C to +280 °C |
| Load Capacity (kg) | 180 |
| Tread (mm) | 32 |
| Top Plate Thickness (mm) | 2 |
| Fork Thickness (mm) | 2 |

BIL GROUP LTD

Porte Marsh Road, Calne, Wiltshire, SN11 9BW

Registered in England No: 2603821

VAT Reg: GB572705729

