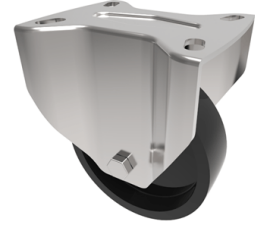


## Glass Filled Technopolymer Resin Plate Fixed Castor Locking Castor 100mm 180kg Load

**Product code: SSXMFL100GFPTF**



Grade 304 fixed castor with a top plate fixing fitted with a 280C grey techno polymer reinforced with glass fiber wheel with a PTFE bush. Wheel diameter 100mm, tread width 32mm, overall height 128mm, top plate 105mm x 85mm, hole centres 80mm x 60mm or 75mm x 45mm Load capacity 180kg at 280c

Diameter (mm)	100
Fixing Option	Plate
Castor Type	Fixed
Plate Size (mm)	100 x 85
Hole Centres (mm)	80/75 x 60/45
To Suit Fixing Bolt (mm)	8
Height (mm)	128
Bearing Type	PTFE Bush
Wheel Material	Technopolymer
Colour / Shore Hardness	Black High Temperature Technopolymer
Temperature Resistance	-40 °C to +280 °C
Load Capacity (kg)	180
Tread (mm)	32
Top Plate Thickness (mm)	2.5
Fork Thickness (mm)	2.5

### BIL GROUP LTD

Porte Marsh Road, Calne, Wiltshire, SN11 9BW

Registered in England No: 2603821

VAT Reg: GB572705729

