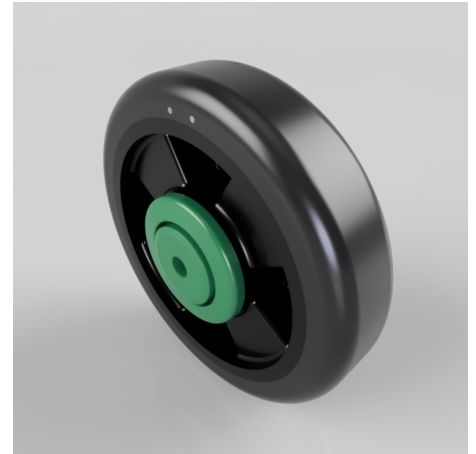


125mm Wheel with Recyclable PU Tyre, PP Rim, Ball Bearing, 125kg Load

Product code: GWSC125RPNBJM8

A modular wheel with a recyclable/replaceable 125mm tyre, ideal for shopping trolleys & carts. Rated for 125kg loads.

- Be more sustainable - fit once then just replace the tyres
- Smooth movement with the precision, double sealed life time bearings
- Guaranteed: 1 year warranty on the polyurethane (PU) tyre and 3 years on the polypropylene (PP) rim
- Tested to multiple standards



Scroll down for full details.

Wheel Material	Polyurethane on Polypropylene
Diameter (mm)	125
Hub Width (mm)	40
Bore Size (mm)	8
Tread (mm)	30
Colour / Shore Hardness	Black Polyurethane on Polypropylene / 95 Shore A
Temperature Resistance	-20 °C TO +70 °C
Bearing Type	Ball
Load Capacity (kg)	125

BIL GROUP LTD

Porte Marsh Road, Calne, Wiltshire, SN11 9BW

Registered in England No: 2603821

VAT Reg: GB572705729

