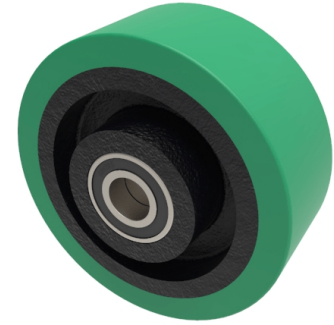


Green Polyurethane Cast Iron 100mm Ball Bearing Wheel 300kg Load

Product code: BZH100WEPTBJM15



Green polyurethane tyre cast iron centred wheel with sealed ball bearings and no grease nipple. Wheel diameter 100mm, tread width 40mm, hub 48mm, bore 15mm. Load capacity 300kg

Bearing Type	Ball
Bore Size (mm)	15
Diameter (mm)	100
Hub Width (mm)	48
Load Capacity (kg)	300
Tread (mm)	40
Wheel Material	Polyurethane on Cast Iron
Colour / Shore Hardness	Green Polyurethane on Cast Iron Rim / 94 Shore A
Temperature Resistance	-20 °C TO +80 °C

BIL GROUP LTD

Porte Marsh Road, Calne, Wiltshire, SN11 9BW

Registered in England No: 2603821

VAT Reg: GB572705729

