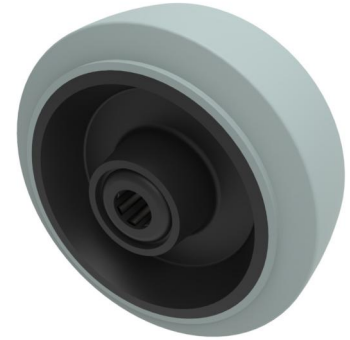


Grey Elastic Rubber 65shore A 100mm Roller Bearing Wheel 200kg Load

Product code: BZMM100WSRNGRB



Grey 65 shore A elastic rubber tyre on black nylon centred wheel with a roller bearing. Diameter 100mm, tread width 36mm, bore size 12mm, hub length 40mm. Load capacity 200kg. REACH compliant also PAH-Free rubber to confirm to EU-directive 2005/69/EC

Diameter (mm)	100
Load Capacity (kg)	200
Wheel Material	Rubber on Nylon
Bearing Type	Roller
Tread (mm)	36
Hub Width (mm)	40
Bore Size (mm)	12
Colour / Shore Hardness	Grey Elastic Rubber on Nylon Rim / 65 Shore A
Temperature Resistance	-30 °C TO +60 °C

BIL GROUP LTD

Porte Marsh Road, Calne, Wiltshire, SN11 9BW

Registered in England No: 2603821

VAT Reg: GB572705729

