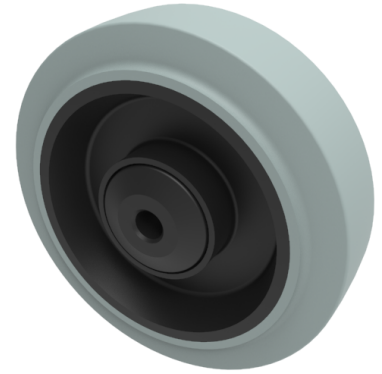


## Grey Elastic Rubber 65shore A 125mm Ball Bearing Wheel 250kg Load

**Product code: BZMM125WSRNGBJM10**



Grey 65 shore A elastic rubber tyre on black nylon centred wheel with a ball bearing and reducing caps. Diameter 125mm, tread width 36mm, bore size 10mm, hub length 42mm. Load capacity 250kg. PAH-Free rubber to confirm to EU-directive 2005/69/EC

Diameter (mm)	125
Wheel Material	Rubber on Nylon
Bearing Type	Ball
Tread (mm)	36
Hub Width (mm)	42
Bore Size (mm)	10
Load Capacity (kg)	250
Colour / Shore Hardness	Grey Elastic Rubber on Nylon Rim / 65 Shore A
Temperature Resistance	-30 °C TO +60 °C

### BIL GROUP LTD

Porte Marsh Road, Calne, Wiltshire, SN11 9BW

Registered in England No: 2603821

VAT Reg: GB572705729

