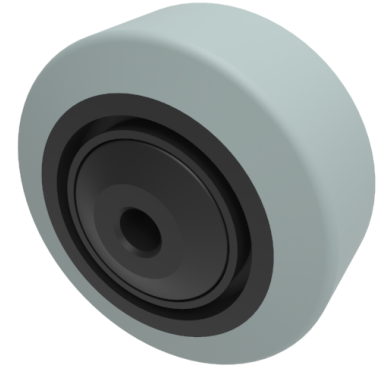


Grey Elastic Rubber 65shore A 80mm Ball Bearing Wheel 150kg Load

Product code: BZMM80WSRNGBJM10



65 shore A grey elastic rubber tyre on a black nylon centred wheel with a ball bearing. Wheel diameter 80mm, tread width 35mm, bore 10mm, hub 42mm. Load capacity 150kg. REACH compliant also PAH-Free rubber to confirm to EU-directive 2005/69/EC

Diameter (mm)	80
Load Capacity (kg)	150
Wheel Material	Rubber on Nylon
Bearing Type	Ball
Tread (mm)	35
Hub Width (mm)	42
Bore Size (mm)	10
Colour / Shore Hardness	Grey Elastic Rubber on Nylon Rim / 65 Shore A
Temperature Resistance	-30 °C TO +60 °C

BIL GROUP LTD

Porte Marsh Road, Calne, Wiltshire, SN11 9BW

Registered in England No: 2603821

VAT Reg: GB572705729

