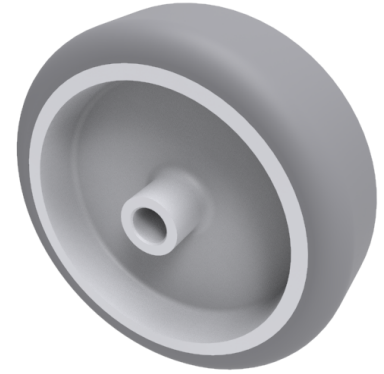


Grey Rubber 100mm Plain Bearing Wheel 100kg Load

Product code: BZM100WGR

Grey thermoplastic rubber on polypropylene wheel with plain bore. Wheel diameter 100mm, tread width 32mm, Hub width 36mm, Bore size 10mm. Load capacity 100kg



Wheel Material	Rubber on Polypropylene
Diameter (mm)	100
Load Capacity (kg)	90
Bearing Type	Plain
Bore Size (mm)	10
Tread (mm)	32
Hub Width (mm)	36
Colour / Shore Hardness	Grey Rubber on Polypropylene Rim / 85 Shore A
Temperature Resistance	-20 °C TO +60 °C

BIL GROUP LTD

Porte Marsh Road, Calne, Wiltshire, SN11 9BW

Registered in England No: 2603821

VAT Reg: GB572705729

